



US006982524B2

(12) **United States Patent**
Park et al.

(10) **Patent No.:** **US 6,982,524 B2**
(45) **Date of Patent:** **Jan. 3, 2006**

(54) **DUAL PANEL-TYPE ORGANIC ELECTROLUMINESCENT DISPLAY DEVICE AND METHOD OF FABRICATING THE SAME**

6,175,345 B1 * 1/2001 Kuribayashi et al. 345/76
6,429,599 B1 * 8/2002 Yokoyama 315/169.3
6,744,197 B2 * 6/2004 Park et al. 313/504
6,777,870 B2 * 8/2004 Sundahl 313/504
6,911,670 B2 * 6/2005 Kim et al. 257/72
2003/0127972 A1 * 7/2003 Han et al. 313/504
2004/0207315 A1 * 10/2004 Robbie et al. 313/504

(75) Inventors: **Jae-Yong Park**, Gyeonggi-do (KR);
So-Haeng Cho, Gyeonggi-do (KR)

(73) Assignee: **LG.Philips LCD Co., Ltd.**, (KR)

FOREIGN PATENT DOCUMENTS

JP 10-333601 12/1998

(*) Notice: Subject to any disclaimer, the term of this patent is extended or adjusted under 35 U.S.C. 154(b) by 224 days.

* cited by examiner

Primary Examiner—Karabi Guharay

Assistant Examiner—German Colon

(74) *Attorney, Agent, or Firm*—Morgan Lewis & Bockius LLP

(21) Appl. No.: **10/695,947**

(22) Filed: **Oct. 30, 2003**

(65) **Prior Publication Data**

US 2004/0090173 A1 May 13, 2004

(30) **Foreign Application Priority Data**

Nov. 13, 2002 (KR) 10-2002-0070299

(51) **Int. Cl.**
H05B 33/06 (2006.01)

(52) **U.S. Cl.** **313/506**; 313/504; 313/505;
313/512; 257/81

(58) **Field of Classification Search** 313/498–512
See application file for complete search history.

(56) **References Cited**

U.S. PATENT DOCUMENTS

6,046,547 A * 4/2000 Nishio et al. 315/169.3

(57) **ABSTRACT**

An organic electroluminescent display device includes first and second substrates bonded together, the first and second substrates having a plurality of pixel regions, each pixel region includes a central portion and first and second portions at both sides of the central portion, a driving element on an inner surface of the first substrate within each of the plurality of pixel regions, the driving element being disposed in the central portion, first and second connection electrodes contacting the driving element and disposed in the first and second portions, a first electrode on an inner surface of the second substrate, an organic electroluminescent layer on the first electrode, and a second electrode on the organic electroluminescent layer, the second electrode contacting the first and second connection electrodes.

21 Claims, 10 Drawing Sheets

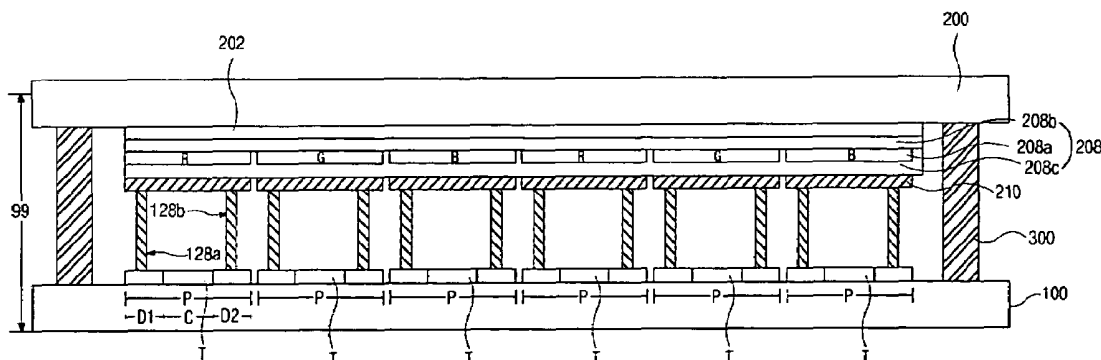


FIG. 1
Related Art

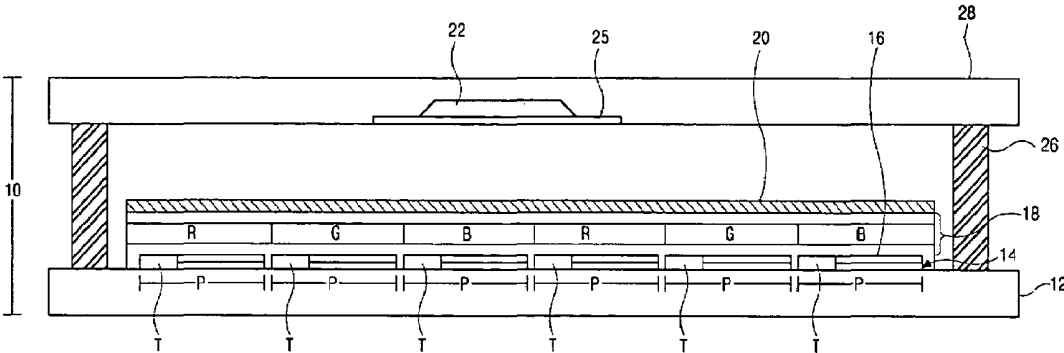


FIG. 2
Related Art

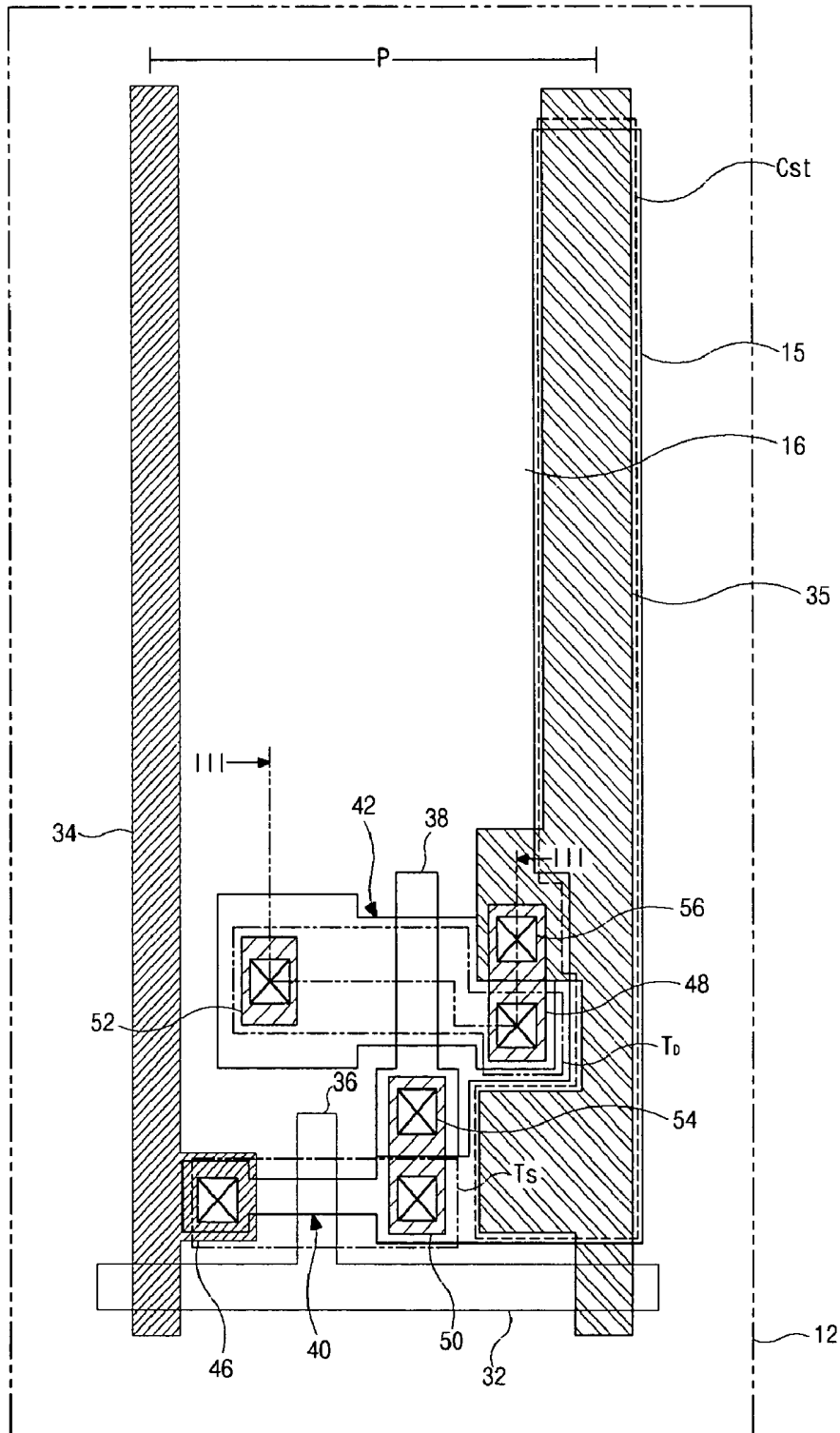


FIG. 3
Related Art

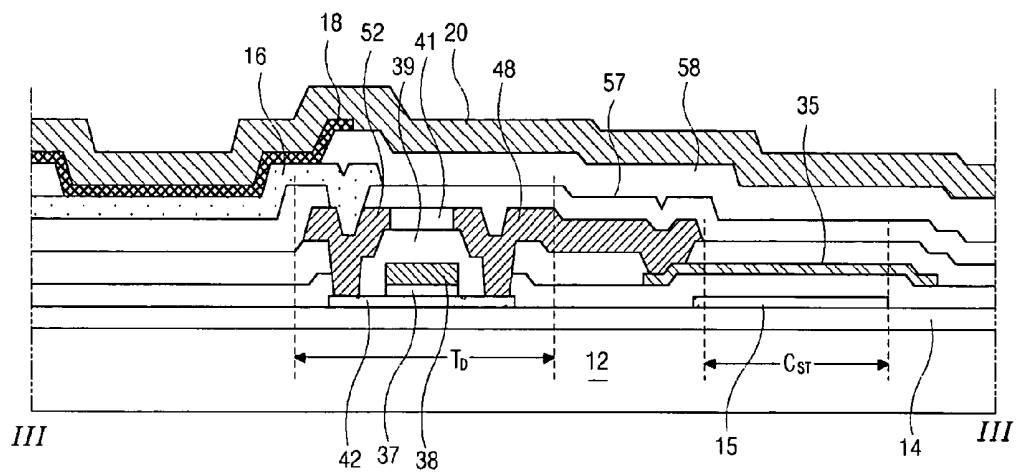


FIG. 4

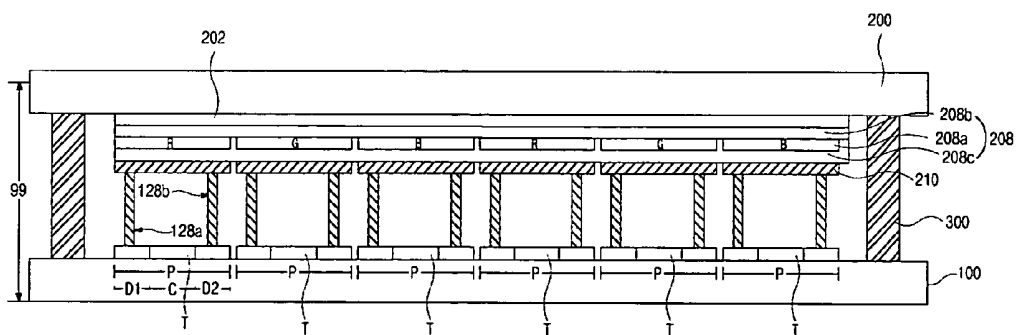


FIG. 5

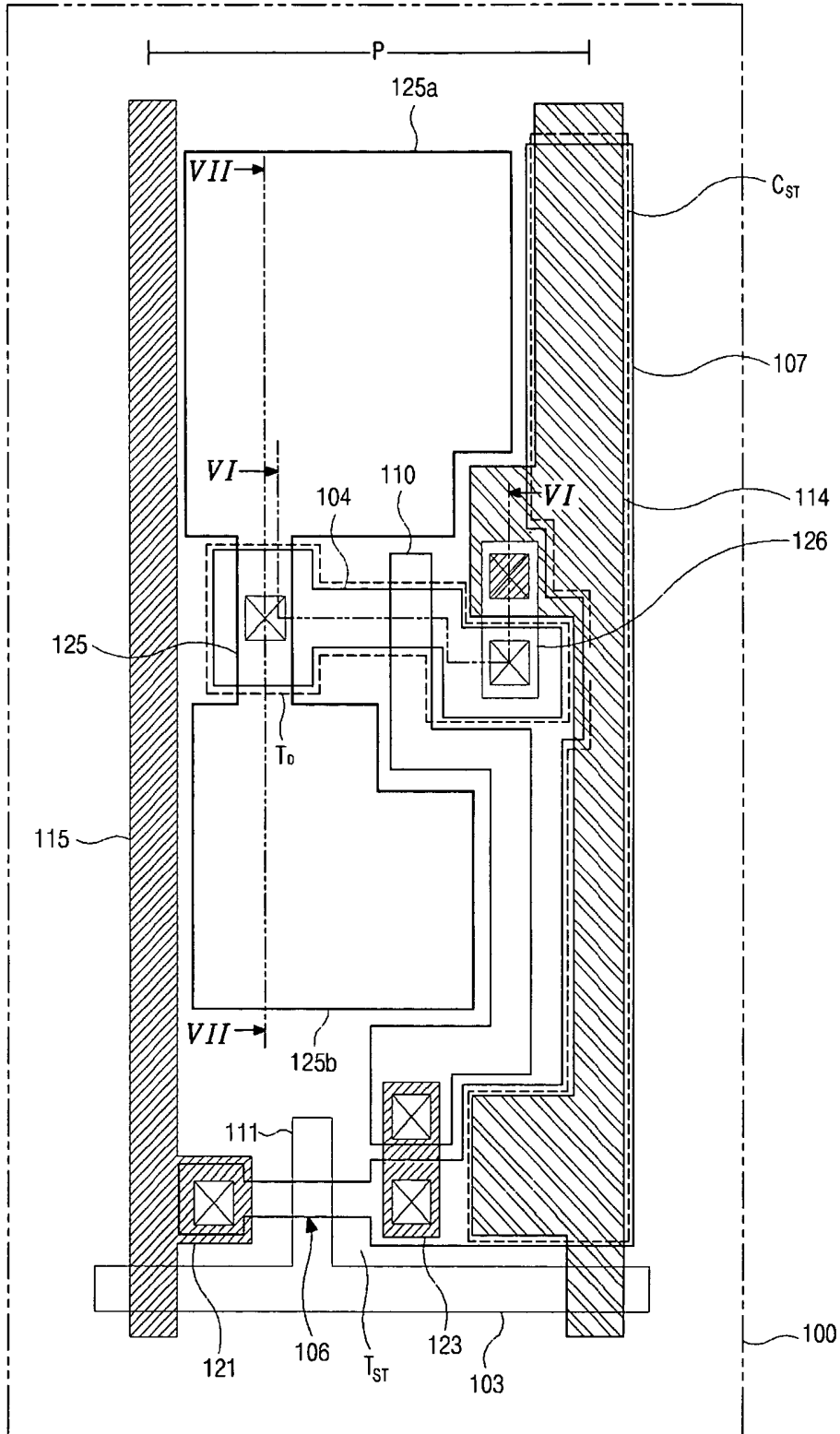


FIG. 6A

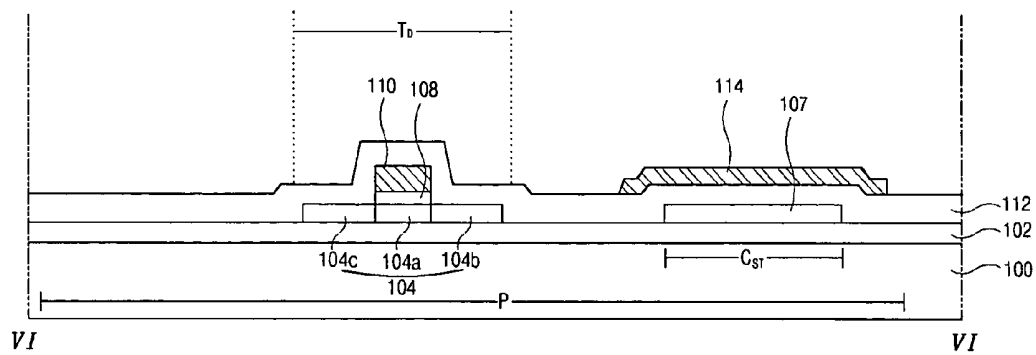


FIG. 6B

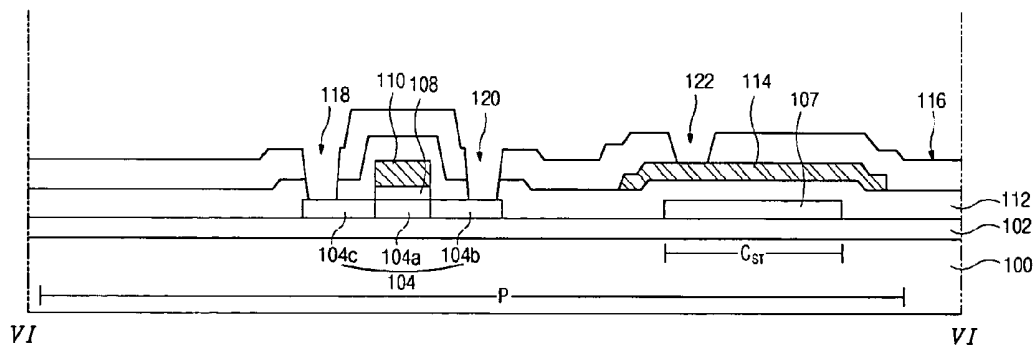


FIG. 6C

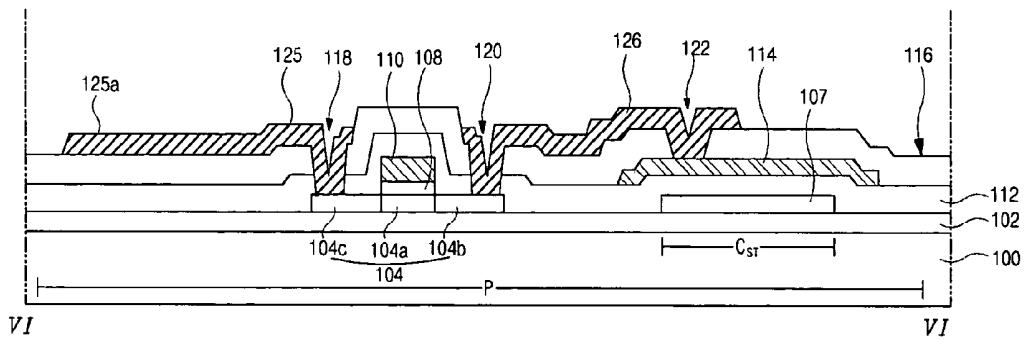


FIG. 6D

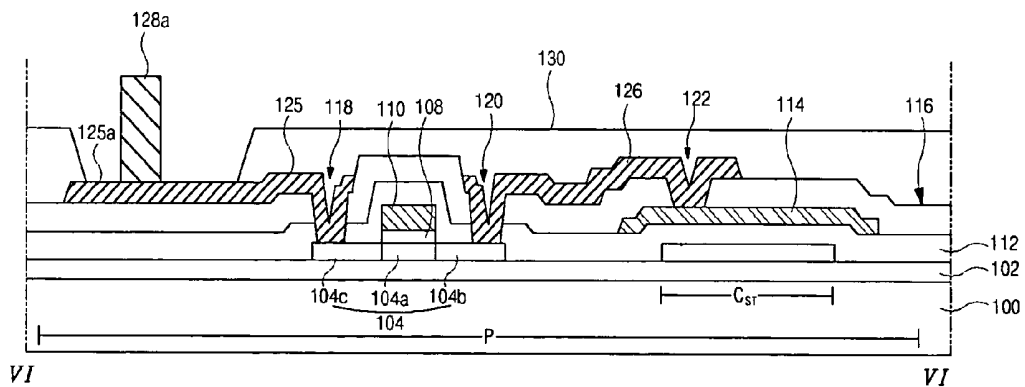


FIG. 7A

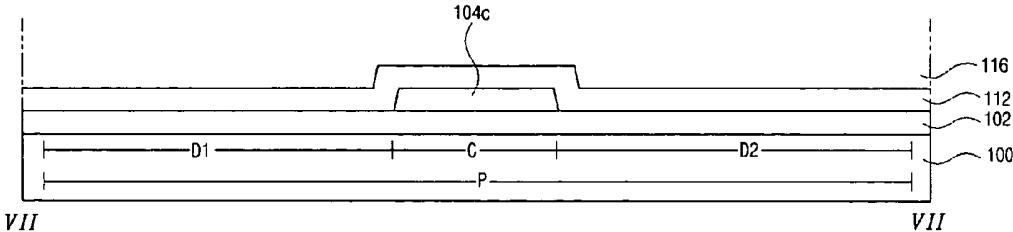


FIG. 7B

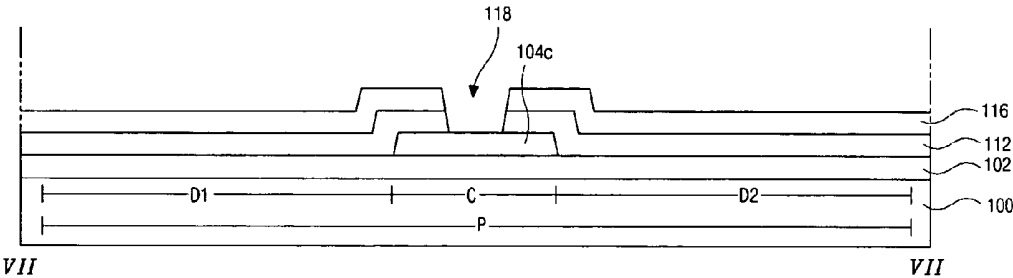


FIG. 7C

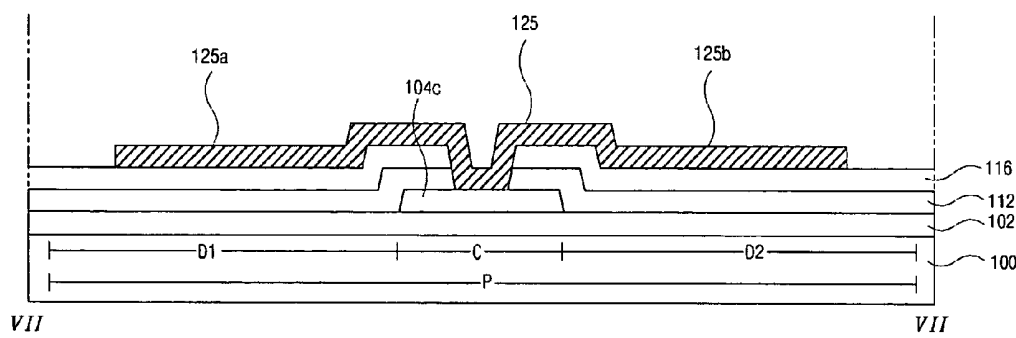


FIG. 7D

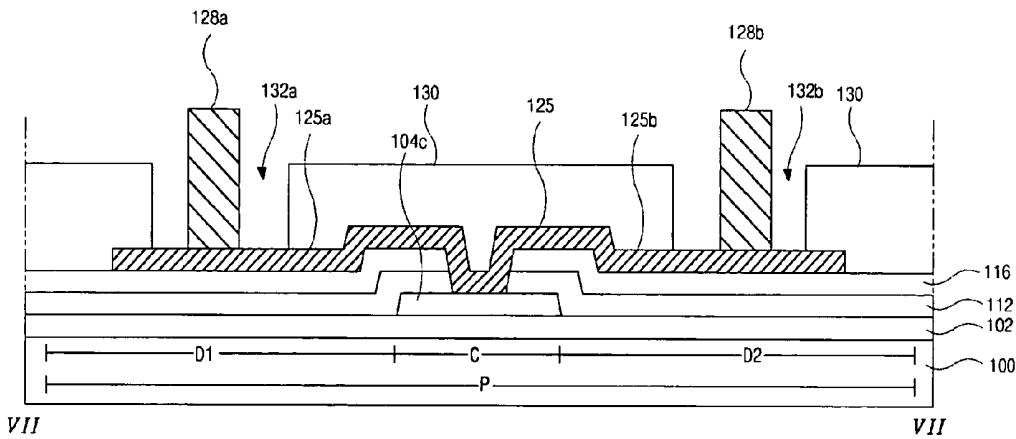


FIG. 8A

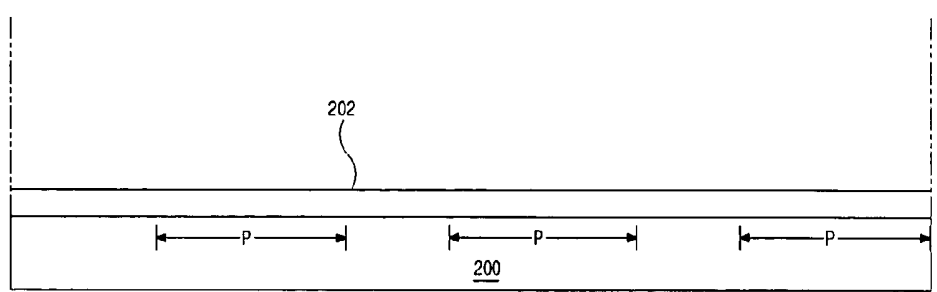


FIG. 8B

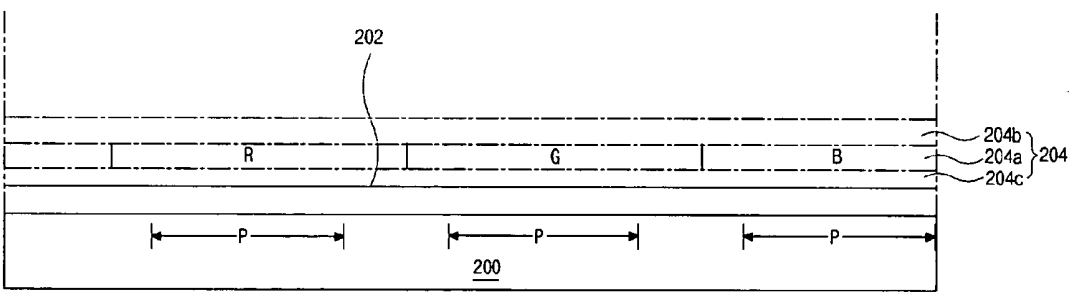
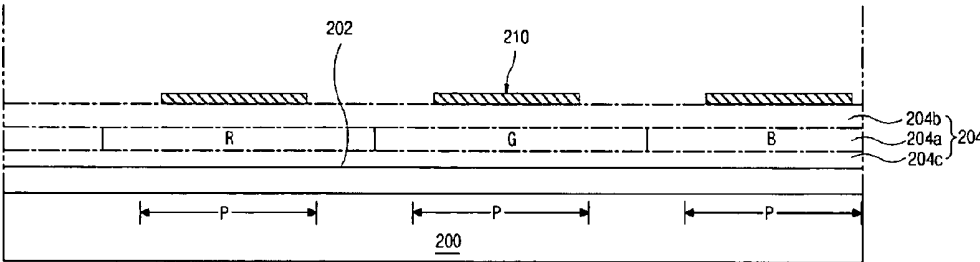


FIG. 8C



**DUAL PANEL-TYPE ORGANIC
ELECTROLUMINESCENT DISPLAY DEVICE
AND METHOD OF FABRICATING THE
SAME**

The present invention claims the benefit of Korean Patent Application No. 2002-70299 filed in Korea on Nov. 13, 2002, which is hereby incorporated by reference.

BACKGROUND OF THE INVENTION

1. Field of the Invention

The present invention relates to an organic electroluminescent display device and a method of fabricating an organic electroluminescent display device, and more particularly, to a dual panel-type organic electroluminescent display device and a method of fabricating a dual panel-type organic electroluminescent display device.

2. Discussion of the Related Art

In general, organic electroluminescent display (OLED) devices have an electron-input electrode, which is commonly referred to as a cathode, and hole-input electrode, which is commonly referred to as an anode. The electrons and the holes are supplied to an electroluminescent layer from the cathode and anode, respectively, wherein the electron and hole together form an exciton. The OLED device emits light when the exciton is reduced from an excited state level to a ground state level. Accordingly, since the OLED devices do not require additional light sources, both volume and weight of the OLED devices may be reduced. In addition, the OLED devices are advantageous because of their low power consumption, high luminance, fast response time, and low weight. Presently, the OLED devices are commonly implemented in mobile telecommunication terminals, car navigation systems (CNSs), personal digital assistants (PDAs), camcorders, and palm computers. In addition, since manufacturing processes for the OLED devices are simple, manufacturing costs can be reduced as compared to liquid crystal display (LCD) devices.

The OLED devices may be classified into passive matrix-type and active matrix-type. Although the passive matrix-type OLED devices have simple structures and simplified manufacturing processes, they require high power consumption and are not suitable for large-sized display devices. In addition, aperture ratios decrease as the number of electro lines increase. On the other hand, the active matrix-type OLED devices have high light-emitting efficiency and high image display quality.

FIG. 1 is a cross sectional view of an OLED device according to the related art. In FIG. 1, the OLED device 10 has a transparent first substrate 12, a thin film transistor array part 14, a first electrode 16, an organic electroluminescent layer 18, and a second electrode 20, wherein the thin film transistor array part 14 is formed on the transparent first substrate 12. The first electrode 16, organic electroluminescent layer 18, and second electrode 20 are formed over the thin film transistor array part 14. The electroluminescent layer 18 emits red (R), green (G), and blue (B) colored light, and it is commonly formed by patterning organic material separately in each pixel region "P" for the R, G, and B colored light. A second substrate 28 has a moisture absorbent desiccant 22. The OLED device 10 is completed by bonding the first and second substrates 12 and 28 together by disposing a sealant 26 between the first and second substrates 12 and 28. The moisture absorbent desiccant 22 removes moisture and oxygen that may be infiltrated into an interior of the organic ELD 10. The moisture absorbent

desiccant 22 is formed by etching away a portion of the second substrate 28, filling the etched portion of the second substrate 28 with moisture absorbent desiccant material, and fixing the moisture absorbent desiccant material with a tape 25.

FIG. 2 is a plan view of a thin film transistor array part of an OLED device according to the related art. In FIG. 2, each of a plurality of pixel regions "P" defined on a substrate 12 includes a switching element "T_S," a driving element "T_D," and a storage capacitor "C_{ST}." The switching element "T_S" and the driving element "T_D" may be formed with combinations of more than two thin film transistors (TFTs), and the substrate 12 is formed of a transparent material, such as glass and plastic. A gate line 32 is formed along a first direction, and a data line 34 is formed along a second direction perpendicular to the first direction, wherein the data line 34 crosses the gate line perpendicularly with an insulating layer between the gate and data lines 32 and 34. In addition, a power line 35 is formed along the second direction, and is spaced apart from the data line 34.

The TFT used for the switching element "T_S" has a switching gate electrode 36, a switching active layer 40, a switching source electrode 46, and a switching drain electrode 50. The TFT for the driving element "T_D" has a driving gate electrode 38, a driving active layer 42, a driving source electrode 48, and a driving drain electrode 52. The switching gate electrode 36 is electrically connected to the gate line 32, and the switching source electrode 46 is electrically connected to the data line 34. In addition, the switching drain electrode 50 is electrically connected to the driving gate electrode 38 through a contact hole 54, and the driving source electrode 48 is electrically connected to the power line 35 through a contact hole 56. Further, the driving drain electrode 52 is electrically connected to a first electrode 16 within the pixel region "P," wherein the power line 35 and a first capacitor electrode 15 that is formed of polycrystalline silicon layer form a storage capacitor "C_{ST}".

FIG. 3 is a cross sectional view along III—III of FIG. 2 according to the related art. In FIG. 3, a first insulating layer (i.e., a buffer layer) 14 is formed on a substrate 12, and a driving element, (i.e., a driving thin film transistor TFT) "T_D" including an active layer 42, a gate electrode 38, and source and drain electrodes 48 and 52 is formed on the first insulating layer 14. The active layer 42 is formed on the first insulating layer 14 and a second insulating layer (a gate insulating layer) 37 is interposed between the active layer 42 and the gate electrode 38. In addition, third and fourth insulating layers 39 and 41 are interposed between the gate electrode 38 and the source and drain electrodes 48 and 52. Further, a power line 35 is formed between the third and fourth insulating layers 39 and 41, and connected to the source electrode 48.

A first electrode 16 is formed over the driving TFT "T_D" and is connected to the drain electrode 52 of the driving TFT "T_D" with a fifth insulating layer 57 between the first electrode 16 and the driving TFT "T_D". An organic electroluminescent (EL) layer 18 is formed on the first electrode 16 for emitting light of a particular color wavelength, and a second electrode 20 is formed on the organic EL layer 18. Accordingly, after forming a sixth insulating layer 58 on the first electrode 16, the sixth insulating layer 58 is patterned to expose the first electrode 16. Then, the organic EL layer 18 and the second electrode 20 are sequentially formed on the exposed first electrode 16, and a storage capacitor "C_{ST}" is connected in parallel to the driving TFT "T_D," and includes first and second capacitor electrodes 15 and 35. The source electrode 48 contacts the second capacitor electrode 35 (i.e.,

a power line), and the first capacitor electrode **15** is formed of polycrystalline silicon material under the second capacitor electrode **35**. Moreover, the second electrode **20** is formed on an entire surface of the substrate **12** on which the driving TFT "T_D," the storage capacitor "C_{ST}," and the organic electroluminescent layer **18** are formed.

In the OLED device, a TFT array part and an organic electroluminescent diode are formed over a first substrate, and an additional second substrate is attached with the first substrate for encapsulation. However, when the array part and the organic EL diode are formed on one substrate, a production yield of the organic ELD is determined by a multiplication of TFT's yield and organic emission layer's yield. Since the yield of the organic emission layer is relatively low, the production yield of an ELD is limited by the yield of the organic layer. For example, even when a TFT is properly fabricated, an OLED device using a thin film of about 1000 Å thickness can be determined to be unacceptable due to defects of the organic emission layer. Accordingly, the loss of materials causes an increase in production costs.

In general, OLED device are classified into bottom emission-type and top emission-type according to an emission direction of light used for displaying images. Bottom emission-type OLED devices have the advantages of high encapsulation stability and high process flexibility. However, the bottom emission-type OLED devices are ineffective for high resolution devices because they have poor aperture ratios. In contrast, the top emission-type OLED devices have a higher expected life span because they are easily designed and have a high aperture ratio. However, in the top emission-type OLED devices, the cathode is generally formed on an organic emission layer. As a result, transmittance and optical efficiency of the top emission-type OLED devices are reduced because of a limited number of materials that may be selected. If a thin film-type passivation layer is formed to prevent a reduction of the light transmittance, the thin film-type passivation layer may fail to prevent infiltration of exterior air into the device.

SUMMARY OF THE INVENTION

Accordingly, the present invention is directed to an OLED device and a method of fabricating an OLED that substantially obviate one or more of the problems due to limitations and disadvantages of the related art.

An object of the present invention is to provide a dual panel-type OLED device that is fabricated through forming array elements and organic electroluminescent diodes on respective substrates and attaching the respective substrates.

Another object of the present invention is to provide a method of fabricating a dual panel-type OLED device that is fabricated through forming array elements and organic electroluminescent diodes on respective substrates and attaching the respective substrates.

Another object of the present invention is to provide an OLED device having improved production yield, high brightness, and high aperture ratio.

Another object of the present invention is to provide a method of fabricating an OLED device having improved production yield, high brightness, and high aperture ratio.

Additional features and advantages of the invention will be set forth in the description which follows, and in part will be apparent from the description, or may be learned by practice of the invention. The objectives and other advantages of the invention will be realized and attained by the

structure particularly pointed out in the written description and claims hereof as well as the appended drawings.

To achieve these and other advantages and in accordance with the purpose of the present invention, as embodied and broadly described, an organic electroluminescent display device includes first and second substrates bonded together, the first and second substrates having a plurality of pixel regions, each pixel region includes a central portion and first and second portions at both sides of the central portion, a driving element on an inner surface of the first substrate within each of the plurality of pixel regions, the driving element being disposed in the central portion, first and second connection electrodes contacting the driving element and disposed in the first and second portions, a first electrode on an inner surface of the second substrate, an organic electroluminescent layer on the first electrode, and a second electrode on the organic electroluminescent layer, the second electrode contacting the first and second connection electrodes.

In another aspect, a method of fabricating an organic electroluminescent display device includes forming a driving element on a first substrate having a plurality of pixel regions, each pixel region including a central portion and first and second portions at both sides of the central portion, the driving element being disposed in the central portion, forming first and second connection electrodes contacting the driving element, the first and second connection electrodes being respectively disposed in the first and second portions, forming a first electrode on a second substrate, forming an organic electroluminescent layer on the first electrode, forming a second electrode on the organic electroluminescent layer, and bonding the first and second substrates together such that the second electrode contacts the first and second connection electrodes.

It is to be understood that both the foregoing general description and the following detailed description are exemplary and explanatory and are intended to provide further explanation of the invention as claimed.

BRIEF DESCRIPTION OF THE DRAWINGS

The accompanying drawings, which are included to provide a further understanding of the invention and are incorporated in and constitute a part of this specification, illustrate embodiments of the invention and together with the description serve to explain the principle of the invention. In the drawings:

FIG. 1 is a cross sectional view of an OLED device according to the related art;

FIG. 2 is a plan view of a thin film transistor array part of an OLED device according to the related art;

FIG. 3 is a cross sectional view along III—III of FIG. 2 according to the related art;

FIG. 4 is a schematic cross-sectional view of an exemplary OLED device according to the present invention;

FIG. 5 is a schematic plan view of an exemplary thin film transistor array part of an OLED device according to the present invention;

FIGS. 6A to 6D are schematic cross sectional views along VI—VI of FIG. 5 of an exemplary method of fabricating a thin film transistor array part of an organic electroluminescent device according to the present invention;

FIGS. 7A to 7D are schematic cross sectional views along VII—VII of FIG. 5 of another exemplary method of fabricating a thin film transistor array part of an organic electroluminescent device according to the present invention; and

FIGS. 8A to 8C are schematic cross sectional views of another exemplary method of fabricating an organic electroluminescent diode of an organic electroluminescent device according to the present invention.

DETAILED DESCRIPTION OF THE EMBODIMENTS

Reference will now be made in detail to the preferred embodiments of the present invention, examples of which are illustrated in the accompanying drawings.

FIG. 4 is a schematic cross-sectional view of an exemplary OLED device according to the present invention. In FIG. 4, an OLED device 99 may include first and second substrates 100 and 200 facing each other, and bonded together with a sealant 300. The first and second substrates 100 and 200 may include a plurality of pixel regions "P," switching and driving thin film transistors (TFTs) "T," and array lines (not shown) formed on an inner surface of the first substrate 100 within each of the pixel regions "P." Although not shown, the array lines may include a gate line, a data line, a power line, and a common line.

In FIG. 4, a first electrode 202 may be formed on an inner surface of the second substrate 200, and an organic electroluminescent (EL) layer 208 emitting one of red, green, and blue colored lights may be formed on the first electrode 202 within each of the pixel regions "P." In addition, a second electrode 210 may be formed on the organic EL layer 208 within each of the pixel regions "P." The organic EL layer 208 may include a single layer structure or may include a multiple layer structure. The multiple layer structure may include the organic EL layer 208 having a hole-transporting layer 208b on the first electrode 202, an emission layer 208a on the hole-transporting layer 208b, and an electron-transporting layer 208c on the emission layer 208a.

The pixel regions "P" may each include a central portion "C" and first and second portions "D1" and "D2" surrounding the central portion "C," wherein the driving TFT "T" may be formed in the central portion "C." In addition, first and second connection electrodes 128a and 128b may be formed in the first and second portions "D1" and "D2," respectively, wherein the first and second connection electrodes 128a and 128b may be connected to the second electrode 210. The first and second connection electrodes 128a and 128b may be formed on the driving TFT "T" during a fabricating process of the first substrate 100, or the first and second connection electrodes 128a and 128b may be formed on the second electrode 210 during a fabricating process of the second substrate 200. After bonding the first and second substrates 100 and 200 together, the driving TFT "T" and the second electrode 210 may be connected to each other through the first and second connection electrodes 128a and 128b.

FIG. 5 is a schematic plan view of an exemplary thin film transistor array part of an OLED device according to the present invention. In FIG. 5, a gate line 103, a data line 115, and a power line 114 may be formed on a first substrate 100, wherein the data line 115 and the power line 114 may cross the gate line 103 to define a pixel region "P." A driving thin film transistor (TFT) "T_D," a switching thin film transistor (TFT) "T_{ST}," and a storage capacitor "C_{ST}" may be formed within the pixel region "P." The driving TFT "T_D" may include a driving active layer 104, a driving gate electrode 110, and driving source and drain electrodes 126 and 125, and the switching TFT "T_{ST}" may include a switching active layer 106, a switching gate electrode 111, and switching source and drain electrodes 121 and 123. The storage

capacitor "C_{ST}" may be connected in parallel to the driving TFT "T_D," and may use an active pattern 107 of polycrystalline silicon as a first capacitor electrode and the power line 114 as a second capacitor electrode. The switching source electrode 121 may be connected to the data line 115, and the switching drain electrode 123 may be connected to the driving gate electrode 110.

The driving TFT "T_D" may be formed at a central portion of the pixel region "P." Accordingly, the driving gate electrode 110 may extend to the switching TFT "T_{ST}" and may contact the switching drain electrode 123. The driving drain electrode 125 may include first and second extensions 125a and 125b, and the pixel region "P" may be divided into first and second portions with the central portion having the driving TFT "T_D" as a center. The first and second extensions 125a and 125b may be formed in the first and second portions, respectively. Although not shown, the first and second extensions 125a and 125b may contact the first and second connection electrodes 128a and 128b (in FIG. 4), respectively.

FIGS. 6A to 6D and are schematic cross sectional views along VI—VI of FIG. 5 of an exemplary method of fabricating a thin film transistor array part of an organic electroluminescent device according to the present invention, and FIGS. 7A to 7D are schematic cross sectional views along VII—VII of FIG. 5 of another exemplary method of fabricating a thin film transistor array part of an organic electroluminescent device according to the present invention.

In FIGS. 6A and 7A, a first insulating layer (i.e., a buffer layer) 102 may be formed on a first substrate 100 having a pixel region "P" by depositing one of inorganic insulating material(s), such as silicon nitride (SiN_x) and silicon oxide (SiO₂). The pixel region "P" may be divided into a central portion "C," and first and second portions "D1" and "D2" at both sides of the central portion "C," wherein a driving thin film transistor "T_D" and a storage capacitor "C_{ST}" may be disposed in the central portion "C."

Then, an amorphous silicon (a-Si:H) layer (not shown) may be formed on the first insulating layer 102, and crystallized to form a polycrystalline silicon layer (not shown). Next, a driving active layer 104 including a channel region 104a, and source and drain regions 104b and 104c at both sides of the channel region 104a may be formed by patterning the polycrystalline silicon layer. At the same time, an active pattern 107 used as a first capacitor electrode may be formed on the first insulating layer 102. Alternatively, a dehydrogenation process may be performed before the crystallization process, and the crystallization process can be performed by using heat or light.

Next, a second insulating layer (i.e., a gate insulating layer) 108 may be formed on the driving active layer 104 by depositing inorganic insulating material(s), such as silicon nitride (SiN_x) and silicon oxide (SiO₂). The second insulating layer 108 may be formed on an entire surface of the first substrate 100 without any subsequent etch process, or may be etched to have the same shape as a driving gate electrode 110 after forming the driving gate electrode 110.

Next, a driving gate electrode 110 may be formed on the second insulating layer 108 over the channel region 104a, and as shown in FIG. 5, the driving gate electrode 110 may extend to a switching TFT "T_{ST}." Then, the source and drain regions 104b and 104c of the active layer 104 may be doped with impurities, such as boron (B) or phosphorous (P). The driving gate electrode 110 may include conductive metallic

material(s), such as aluminum (Al), an aluminum (Al) alloy, copper (Cu), tungsten (W), tantalum (Ta), and molybdenum (Mo).

Next, a third insulating layer (i.e., an interlayer insulating layer) **112** may be formed on the driving gate electrode **110**, and a power line **114** may be formed on the third insulating layer **112**. The power line **114** may supply signals to a driving drain electrode (not shown) and may be used as a second capacitor electrode.

In FIGS. **6B** and **7B**, a fourth insulating layer (i.e., a passivation layer) **116** may be formed on the power line **114** by depositing inorganic insulating material(s), such as silicon nitride (SiN_x) and silicon oxide (SiO_2), or organic insulating material(s), such as benzocyclobutene (BCB) and acrylic resin. The fourth insulating layer **116** may include first, second, and third contact holes **120**, **118**, and **122** to expose the source region **104b**, the drain region **104c**, and the power line **114**, respectively. Although not shown, a switching active layer may be simultaneously exposed.

In FIGS. **6C** and **7C**, driving source and drain electrode **126** and **125** may be formed on the fourth insulating layer **116** by depositing and patterning conductive metallic material(s), such as aluminum (Al), an aluminum (Al) alloy, chromium (Cr), tungsten (W), and molybdenum (Mo). The driving drain electrode **125** may be connected to the drain region **104c** through the first contact hole **118** and may extend to the first and second portions "D1" and "D2." The source electrode **126** may be connected to the source region **104b** through the second contact hole **120** and may be connected to the power line **114** through the third contact hole **122**. Although not shown, switching source and drain electrodes and a data line **115** (in FIG. **5**) may be simultaneously formed over the switching active layer. The switching source electrode may be connected to the data line **115** (in FIG. **5**) parallel to the power line **114**, and the switching drain electrode may be connected to the driving gate electrode **110**. In addition, the driving drain electrode **125** may include first and second extensions **125a** and **125b** disposed in the first and second portions "D1" and "D2" of the pixel regions "P," respectively, wherein the first and second extensions **125a** and **125b** may be formed to have various shapes.

In FIGS. **6D** and **7D**, a fifth insulating layer **130** having first and second open portions **132a** and **132b** may be formed on the driving source and drain electrodes **126** and **125** by depositing organic insulating material(s), such as benzocyclobutene (BCB) and acrylic resin. The first and second open portions **132a** and **132b** may expose the first and second extensions **125a** and **125b** of the driving drain electrode **125**, respectively. In addition, first and second connection electrodes **128a** and **128b** may be formed on the first and second extensions **125a** and **125b**, respectively, wherein the first and second connection electrodes **128a** and **128b** may contact a second electrode **210** (in FIG. **4**) after bonding the first and second substrates **100** and **200** (in FIG. **4**) together. Accordingly, the first and second connection electrodes **128a** and **128b** may include the same material as the second electrode **210** (in FIG. **4**). Alternatively, the fifth insulating layer **130** may be omitted.

In the present invention, a driving TFT may be disposed in a central portion of a pixel region. In addition, first and second connection electrodes may be disposed in first and second portions at both sides of the central portion, respectively. Accordingly, a connection portion between a second electrode and a driving drain electrode may be enlarged. Moreover, since the connection portion may include two parts (first and second connection electrodes), connection inferiority due to a substrate warpage may be prevented.

FIGS. **8A** to **8C** are schematic cross sectional views of another exemplary method of fabricating an organic electroluminescent diode of an organic electroluminescent device according to the present invention. In FIG. **8A**, a first electrode **202** may be formed on a second substrate **200** having a plurality of pixel regions "P." The first electrode **202** may include transparent conductive metallic material(s), such as indium-tin-oxide (ITO) and indium-zinc-oxide (IZO).

In FIG. **8B**, an organic electroluminescent (EL) layer **204** emitting one of red (R), green (G), and blue (B) colored lights may be formed on the first electrode **202** within each of the pixel regions "P." The organic EL layer **204** may have a single layer structure or a multiple layer structure. In the multiple layer structure, the organic EL layer **204** may have a hole-transporting layer **204b** on the first electrode **202**, an emission layer **204a** on the hole-transporting layer **204b**, and an electron-transporting layer **204c** on the emission layer **204a**.

In FIG. **8C**, a second electrode **210** may be formed on the organic EL layer **204** within each of the pixel regions "P." The second electrode **210** may include a single layer structure including at least one of aluminum (Al), calcium (Ca), and magnesium (Mg), for example, or may have a multiple layer structure including lithium fluoride/aluminum (LiF/Al), for example.

Next, an OLED device may be obtained by bonding the first and second substrates **100** and **200** fabricated through processes of FIGS. **6A** to **8C** together.

An OLED device according to the present invention is advantageous since a connection portion may include two parts (first and second connection electrodes) disposed in first and second portions at both sides of a central portion of a pixel region. Accordingly, the connection portion may be enlarged and a connection inferiority due to a substrate warpage may be prevented, thereby obtaining a highly reliable device.

In addition, since the OLED device is a top emission-type OLED device, a thin film transistor may be easily designed, and high resolution and high aperture ratio may be obtained regardless of lower array patterns. Furthermore, since array patterns and an organic EL diode may be formed on respective substrates, production yield and production management efficiency are improved, and a lifetime of an organic EL device is lengthened.

It will be apparent to those skilled in the art that various modifications and variations can be made in the organic electroluminescent device and fabricating method thereof of the present invention without departing from the spirit or scope of the invention. Thus, it is intended that the present invention cover the modifications and variations of this invention provided they come within the scope of the appended claims and their equivalents.

What is claimed is:

1. An organic electroluminescent display device, comprising:
 - first and second substrates bonded together, the first and second substrates having a plurality of pixel regions, each pixel region includes a central portion and first and second portions at both sides of the central portion;
 - a driving element on an inner surface of the first substrate within each of the plurality of pixel regions, the driving element being disposed in the central portion;
 - first and second connection electrodes contacting the driving element and disposed in the first and second portions;

a first electrode on an inner surface of the second substrate;
 an organic electroluminescent layer on the first electrode;
 and
 a second electrode on the organic electroluminescent layer,
 wherein the second electrode contacts the first and second connection electrodes.

2. The device according to claim 1, wherein the driving element includes a thin film transistor having a driving active layer, a driving gate electrode, a driving source electrode, and a driving drain electrode.

3. The device according to claim 2, wherein the driving drain electrode includes a first extension in the first portion and a second extension in the second portion.

4. The device according to claim 3, wherein the first and second connection electrodes contact the first and second extensions, respectively.

5. The device according to claim 1, further comprising a switching element connected to the driving element via a capacitor.

6. The device according to claim 5, wherein the switching element includes a gate electrode connected to a gate line, a source connected to a data line, and a drain connected to a first electrode of the capacitor.

7. The device according to claim 6, wherein the driving element includes a source connected to a second electrode of the capacitor.

8. The device according to claim 6, wherein the drain of the switching element is connected to a gate of the driving element.

9. The device according to claim 1, wherein the first electrode is an anode for injecting holes into the organic electroluminescent layer and the second electrode is a cathode for injecting electrons into the organic electroluminescent layer.

10. The device according to claim 9, wherein the first electrode includes one of indium-tin-oxide (ITO) and indium-zinc-oxide (IZO).

11. The device according to claim 9, wherein the second electrode includes at least one of aluminum (Al), calcium (Ca), magnesium (Mg), and lithium (Li).

12. The device according to claim 1, wherein the organic electroluminescent layer includes a hole-transporting layer and an electron-transporting layer.

13. A method of fabricating an organic electroluminescent display device, comprising:

forming a driving element on a first substrate having a plurality of pixel regions, each pixel region including a central portion and first and second portions at both sides of the central portion, the driving element being disposed in the central portion;

forming first and second connection electrodes contacting the driving element, the first and second connection electrodes being respectively disposed in the first and second portions;

forming a first electrode on a second substrate;

forming an organic electroluminescent layer on the first electrode;

forming a second electrode on the organic electroluminescent layer; and

bonding the first and second substrates together such that the second electrode contacts the first and second connection electrodes.

14. The method according to claim 13, wherein forming of the driving element includes forming a driving active layer, forming a driving gate electrode, and forming driving source and drain electrodes.

15. The method according to claim 14, wherein the driving drain electrode includes a first extension in the first portion and a second extension in the second portion.

16. The method according to claim 15, wherein the first and second connection electrodes contact the first and second extensions, respectively.

17. The method according to claim 13, further comprising forming a switching element connected to the driving element.

18. The method according to claim 13, wherein the first electrode is an anode for injecting holes into the organic electroluminescent layer and the second electrode is a cathode for injecting electrons into the organic electroluminescent layer.

19. The method according to claim 18, wherein the first electrode includes one of indium-tin-oxide (ITO) and indium-zinc-oxide (IZO).

20. The device according to claim 18, wherein the second electrode includes at least one of aluminum (Al), calcium (Ca), magnesium (Mg), and lithium (Li).

21. The method according to claim 13, wherein the organic electroluminescent layer includes a hole-transporting layer and an electron-transporting layer.

* * * * *

专利名称(译)	双面板型有机电致发光显示装置及其制造方法		
公开(公告)号	US6982524	公开(公告)日	2006-01-03
申请号	US10/695947	申请日	2003-10-30
[标]申请(专利权)人(译)	乐金显示有限公司		
申请(专利权)人(译)	LG.PHILIPS LCD CO. , LTD.		
当前申请(专利权)人(译)	LG DISPLAY CO. , LTD.		
[标]发明人	PARK JAE YONG CHO SO HAENG		
发明人	PARK, JAE-YONG CHO, SO-HAENG		
IPC分类号	H05B33/06 H05B33/10 H01L27/32 H01L51/52 H05B33/26		
CPC分类号	H01L27/3253 H05B33/26 H01L51/5203		
代理机构(译)	摩根路易斯律师事务所		
优先权	1020020070299 2002-11-13 KR		
其他公开文献	US20040090173A1		
外部链接	Espacenet USPTO		

摘要(译)

一种有机电致发光显示装置，包括结合在一起的第一和第二基板，第一和第二基板具有多个像素区域，每个像素区域包括中央部分和位于中央部分两侧的第一和第二部分，驱动元件位于多个像素区域中的每个像素区域内的第一基板的内表面，驱动元件设置在中央部分中，第一连接电极和第二连接电极接触驱动元件并设置在第一和第二部分中，第一电极设置在内表面上第二基板，第一电极上的有机电致发光层和有机电致发光层上的第二电极，第二电极接触第一和第二连接电极。

